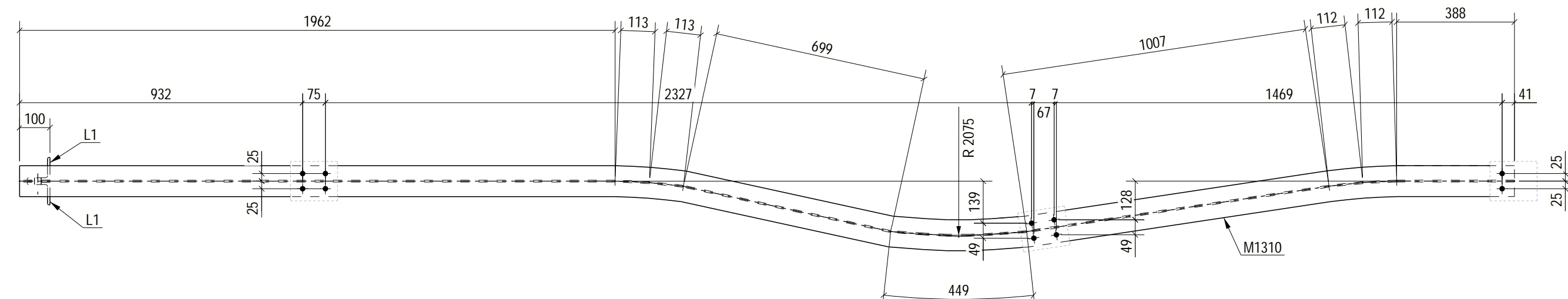
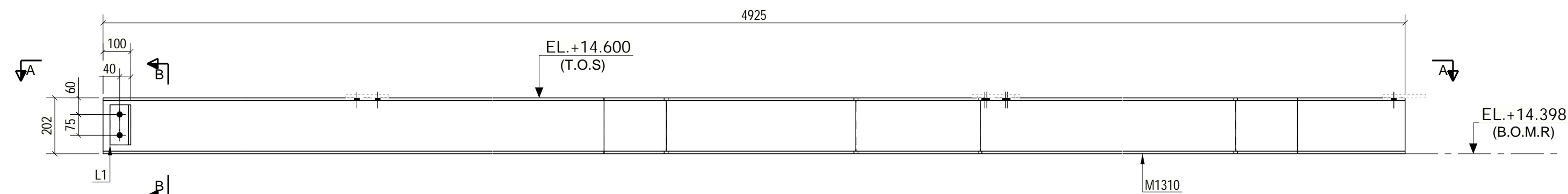


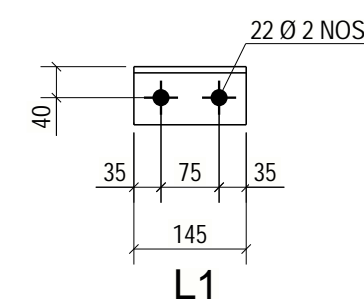
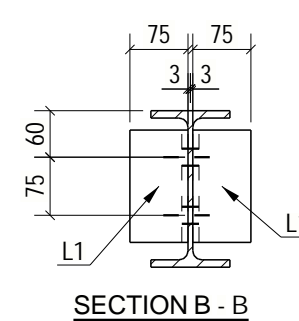
GRID LOCATION		
MR8	D-E/3-2'	+14.600

BOLT LIST			
ASSEMBLY MARK	FIELD BOLT	LENGTH	TOTAL Q'TY
MR8	16 DIA HSGF 8.8	50	10
MR8	20 DIA HSGF 8.8	55	2
TOTAL			12

BILL OF MATERIALS									
ASSEMBLY MK'D: MR8									
ASSY QTY: 1									
Item	Qty./	Profile Size	Wt./Meter	Length	Wt./Item	Total Qty.	Total Wt.	Material /Remarks	
Mk310	Assembly		(Kgs.)	(In mm)	(Kgs.)		(Kgs.)		
L1	1	NP8200X100X25.09	25.09	4939	123.92	1	123.92	E250A	
L1	2	ISA75X75X8	8.90	145	1.30	2	2.60	E250A	
						TOTAL WEIGHT (Kgs.)	126.52		




SECTION A - A







BHEL-INDUSTRIAL SYSTEMS GROUP (CIVIL)	
1) <input checked="" type="checkbox"/>	KEPT FOR INFORMATION. SITE /CONTRACTOR TO ENSURE THE COMPLIANCE OF ALL PREVIOUS COMMENTS AND PROCEED FOR FABRICATION
2) <input type="checkbox"/>	INCORPORATE ALL COMMENTS,RESUBMIT THE REVISED DRAWINGS
BHEL'S APPROVAL WILL NOT ABSOLVE CONTRACTOR FROM HIS RESPONSIBILITY TOWARDS CORRECTNESS OF DRAWING .CONTRACTOR SHALL BEAR THE TOTAL RESPONSIBILITY FOR MISMATCHES ,ERROR IN THE DRAWINGS	
NAME	PRASANTH KUMAR RAI KC
SIGNATURE	---sd---
DATE	

NOTES:-

1. ALL DIMENSIONS ARE IN mm. & LEVELS ARE IN MTR.
2. ALL MEMBERS AND GUSSET PLATES TO BE CUT AFTER FULL SCALE SHOP LAYOUT BEFORE FABRICATION.
3. ALL WELDS ARE 6mm. THICK U.N.O
4. PERMANENT BOLTS SHOWN THUS -----
5. SURFACE TO BE FINISHED ARE SHOWN THUS ----
6. 17.5Ø HOLE FOR M16 BOLTS FOR L 50x50x6
7. FOR MARKING REFER DRAWING NO.PAT-IP-BCC-GH TP-1-100-0001 TO 0021
8. THIS DRAWING HAS BEEN PREPARED BASED ON DESIGN DRG. NO. 9585-001-109-PVC-C-464 & 465-R-100
9. THIS DRAWING SHALL NOT BE SCALED. ONLY WRITTEN DIMENSION SHALL BE FOLLOWED.

						CONSULTANT	 BHARAT CONSTRUCTION COMPANY KOLKATA - RANCHI - DELHI				
						TITLE	GH TP-1 DETAIL OF MONORAIL MKD. MR8				
0	ISSUED FOR APPROVAL	14.12.2022				SCALE : 1:20	DRAWN	CHECKED	APPROVED	DRAWING NO.	REV
REV.	DESCRIPTION	DATE	DRAWN	CHKD.	APPD.	SH. SIZE : A1	B.C.C	S.S	A.C	PAT-IP-BCC-GH TP-1-999-1062-MR8	0

CUSTOMER	<div> NTPC Limited</div>				
PROJECT	3x800MW PATRATU SUPER THERMAL POWER PROJECT, PATRATU				
EPC CONTRACTOR	<div> BHARAT HEAVY ELECTRICALS LTD.</div>				
5-R2 SUB CONTRACTOR	<div> BHARAT HEAVY ELECTRICALS LTD. JAGDISHPUR</div>				
CONSULTANT	<div> BHARAT CONSTRUCTION COMPANY KOLKATA - RANCHI - DELHI</div>				
TITLE	GH TP-1 DETAIL OF MONORAIL MKD. MR8				
SCALE: 1:20	DRAWN	CHECKED	APPROVED	DRAWING NO: PAT-IP-BCC-GH TP-1-999-1062-MR8	REV 0
SH. SIZE	B.C.C	S.S	A.C		

1 NO. MONORAIL REQD. AS DRAWN MKD MR8